

DOUGLAS COUNTY LIBRARIES
PARKER

Don't be reactive with your building

PREVENTATIVE MAINTENANCE

Services

- Infrared (IR) Scanning
- Torque and Clean
- Load and Arc Flash Studies
- Lighting Maintenance

Why Choose Us

Choose Piper Electric as your go-to electrical contractor for preventative maintenance. Since 1983, our licensed Denver electricians have delivered expert 24/7 service for any need—big or small. Proactively safeguard your property, extend equipment lifespan, and avoid costly repairs by scheduling regular maintenance with a trusted team dedicated to your safety.

Benefits of Preventative Maintenance

- ✓ **NFPA 70B NEW STANDARD**
Before 2023, NFPA 70B was just a suggestion, but now it is a standard for electrical equipment maintenance. Don't get dinged by OSHA. **Need help setting up the maintenance program? Call us!**
- ✓ **INCREASED EQUIPMENT LIFESPAN**
Regular maintenance helps prevent wear and tear on electrical equipment.
- ✓ **REDUCED DOWNTIME & PRODUCTIVITY LOSS**
Minimize unexpected breakdowns, which can be costly and disruptive to business operations.
- ✓ **ENHANCED SAFETY & COMPLIANCE**
Regular checks can identify potential hazards - faulty wiring or overloaded circuits.
- ✓ **ENERGY EFFICIENCY & COST SAVINGS**
Well-maintained systems operate more efficiently and lead to reduced energy costs.



Don't just hear it from us TRUST THE FACTS



U.S. fire departments respond to 37,000 industrial fires yearly, causing 150 fatalities and costing \$37 billion globally; 20% are electrical fires.



48% of companies go out of business after a fire and 28% fail within three years.

THE COST OF DOWNTIME PER INDUSTRY (PER HOUR)

Brokerage Service - \$6.5 Million

Manufacturing - \$2.5 Million

Telecommunications - \$2 Million

Retail - \$1.1 Million

Health Care - \$630,000

Sources: National Fire Protection Association (NFPA), FEMA and Pingdom

Let's Get You On the Road to Preventative Maintenance

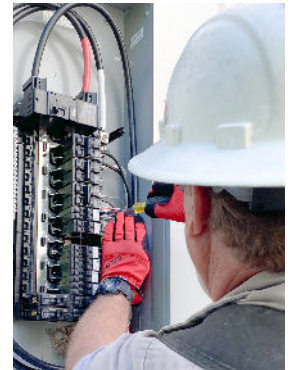
INFRARED SCANS

Infrared scans are designed to detect system overloads, loose or defective components, and damaged switchgear before they lead to costly failures or hazards. This advanced testing method quickly identifies "hot spots" caused by overheating, helping to address dangerous issues proactively, minimize downtime, and ensure the safety and reliability of your electrical system.



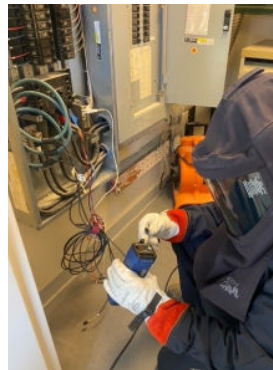
TORQUE AND CLEAN

Ensure the reliability and safety of electrical systems. This process involves tightening electrical connections to manufacturer-specified torque levels and thoroughly cleaning components. Regularly conducting torque and clean services helps prevent equipment failures, reduces fire risks, and extends the lifespan of electrical systems.



LOAD AND ARC FLASH STUDIES

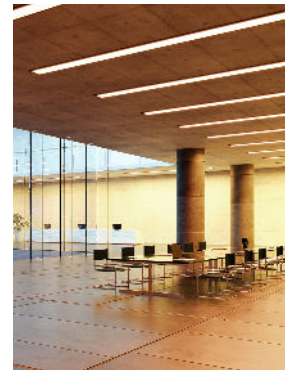
Load Study: A 30-day load study on main gear or specific panels provides accurate data on minimum, maximum, and average current draw. This helps building owners identify available ampacity for expansion or pinpoint current spikes and equipment malfunctions caused by electrical issues.



Arc Flash Study: Identifies electrical hazards, calculates potential arc flash energy, and determines safety measures and PPE to protect workers. It also establishes safety boundaries around live electrical equipment, ensuring a safer work environment and compliance with industry standards.

LIGHTING MAINTENANCE

Lighting maintenance in commercial buildings includes inspections, cleaning, and timely replacements to ensure performance and energy efficiency. This proactive approach enhances safety, extends system lifespan, lowers costs, and reduces unexpected failures.



CALL US 303-422-9219



info@piperelectric.com